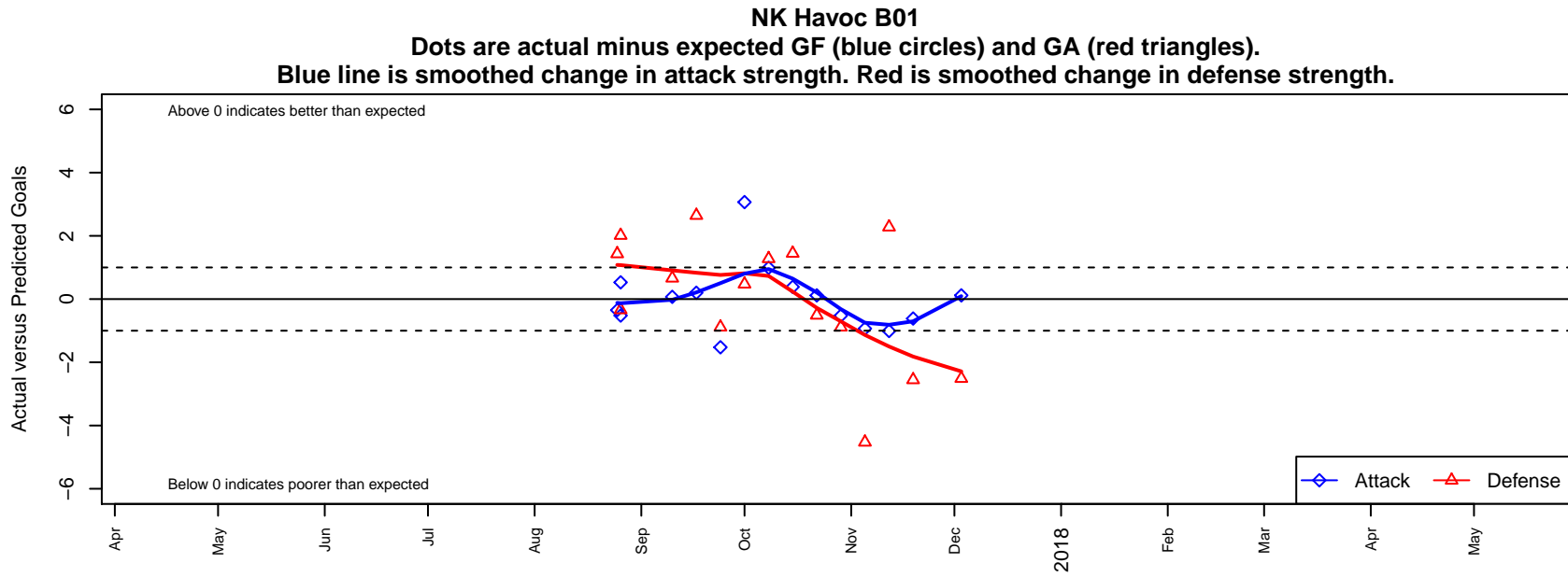


# NK Havoc B01

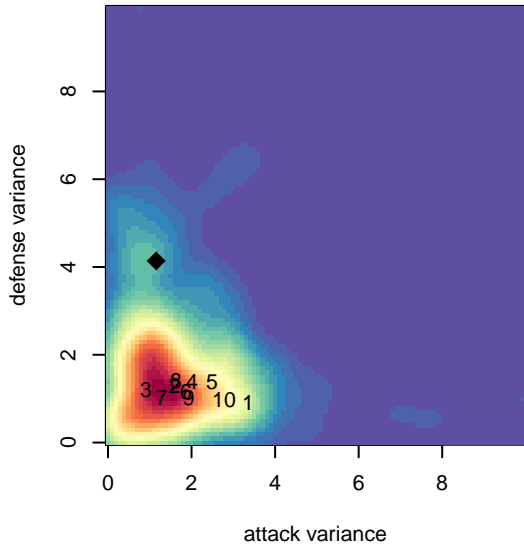
North Kitsap SC  
Poulsbo, WA  
B01 total strength=1170  
attack=4.82 defense=2.71  
fall league = NPSL DIVISION 2 (01) U17

alt names used:  
North Kitsap Havoc 01

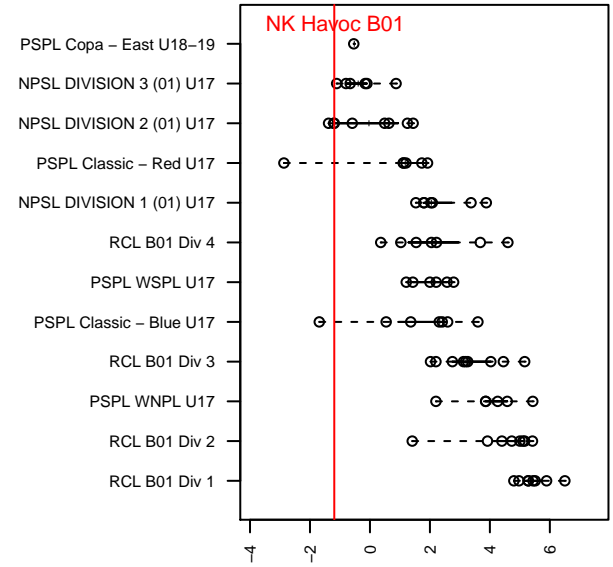
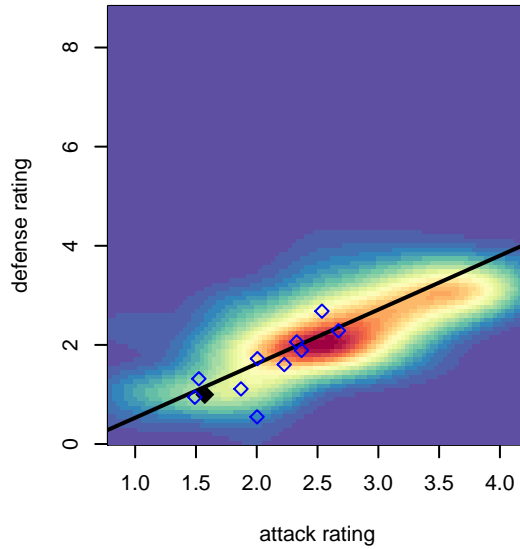
Venues played:  
2017 River Jam Samba U17-19  
2017 NPSL DIVISION 2 (01) U17



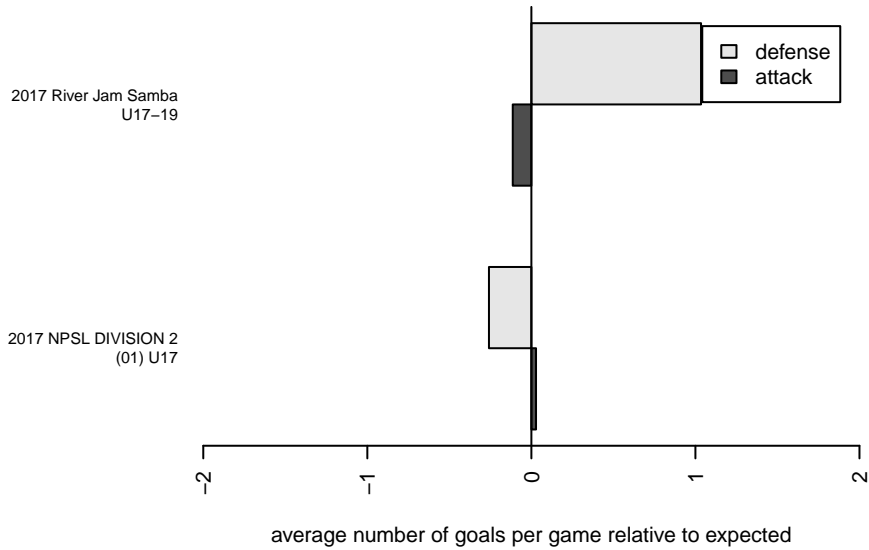
**attack and defense variance (black dot)  
relative to other teams  
and top 10 in region**



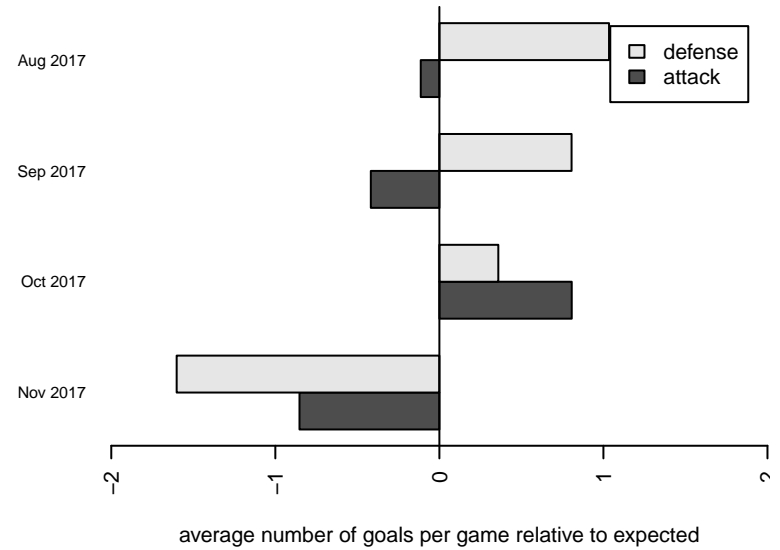
**attack and defense rating  
relative to others at age  
and all opponents in last 13 months**



**Performance relative to 13 month average**



**Performance relative to 13 month average**



<b>date</b>	<b>home</b>		<b>away</b>		<b>venue</b>	<b>pred.home</b>	<b>pred.away</b>
2017-12-03	Seattle United Shoreline Blue B01	4	NK Havoc B01	2	2017 NPSL DIVISION 2 (01) U17	1.49	1.88
2017-11-19	NK Havoc B01	0	BIFC Blue B01	6	2017 NPSL DIVISION 2 (01) U17	0.62	3.45
2017-11-12	NK Havoc B01	0	FWFC Select B01	1	2017 NPSL DIVISION 2 (01) U17	1.01	3.28
2017-11-05	Bellevue United Select B01	7	NK Havoc B01	2	2017 NPSL DIVISION 2 (01) U17	2.47	2.93
2017-10-29	NK Havoc B01	1	Newport FC Barca B01	3	2017 NPSL DIVISION 2 (01) U17	1.52	2.11
2017-10-22	NK Havoc B01	2	Seattle United Shoreline Blue B01	2	2017 NPSL DIVISION 2 (01) U17	1.88	1.49
2017-10-15	BIFC Blue B01	2	NK Havoc B01	1	2017 NPSL DIVISION 2 (01) U17	3.45	0.62
2017-10-08	FWFC Select B01	2	NK Havoc B01	2	2017 NPSL DIVISION 2 (01) U17	3.28	1.01
2017-10-01	NK Havoc B01	6	Bellevue United Select B01	2	2017 NPSL DIVISION 2 (01) U17	2.93	2.47
2017-09-24	Newport FC Barca B01	3	NK Havoc B01	0	2017 NPSL DIVISION 2 (01) U17	2.11	1.52
2017-09-17	NK Havoc B01	1	FWFC Select 1 B01	1	2017 NPSL DIVISION 2 (01) U17	0.80	3.64
2017-09-10	PSA Force Black B01	2	NK Havoc B01	1	2017 NPSL DIVISION 2 (01) U17	2.66	0.93
2017-08-26	FME Xtreme B99	2	NK Havoc B01	2	2017 River Jam Samba U17-19	1.66	1.47
2017-08-26	NK Havoc B01	0	WPFC Navy B00	3	2017 River Jam Samba U17-19	0.52	5.01
2017-08-25	NK Havoc B01	0	RSA Elite B00	3	2017 River Jam Samba U17-19	0.35	4.43